

Do You Know
About...

Heart Disease in Cleveland County

- **Heart Disease** is a term used to describe all the abnormal conditions that occur with the heart and blood vessels. This includes: coronary artery disease, myocardial infarction (heart attack), peripheral artery disease, and heart failure for other underlying conditions.
- **Coronary heart disease** is when plaque builds up in your arteries and can cause blockages which may result in heart attacks, stroke, and death.
- There are two types of **stroke** the most common being **Ischemic stroke** which is when a clot blocks an artery that leads to the brain or is in the brain and causes part of the brain to die.
- The second type is **hemorrhagic stroke** which is the bursting of a blood vessel to the brain that cuts off blood supply and causes part of the brain to die.
- Heart Disease is the leading cause of death in the United States and here in Cleveland County.
- African Americans are more likely to die from heart disease than their white counterparts.

2017:

41% African American Men
23% White Men
27% African American Women
12% White Women

Symptoms in Women:

Lower back pain, Severe heartburn,
Significant fatigue, Lethargy, Nausea,
Increased anxiety

Uncontrolled Risk Factors:

Age, gender, genetics, and family
history.

Controllable Risk Factors:

blood pressure, cholesterol,
diabetes. smoking, weight,
physical activity, and dieting.

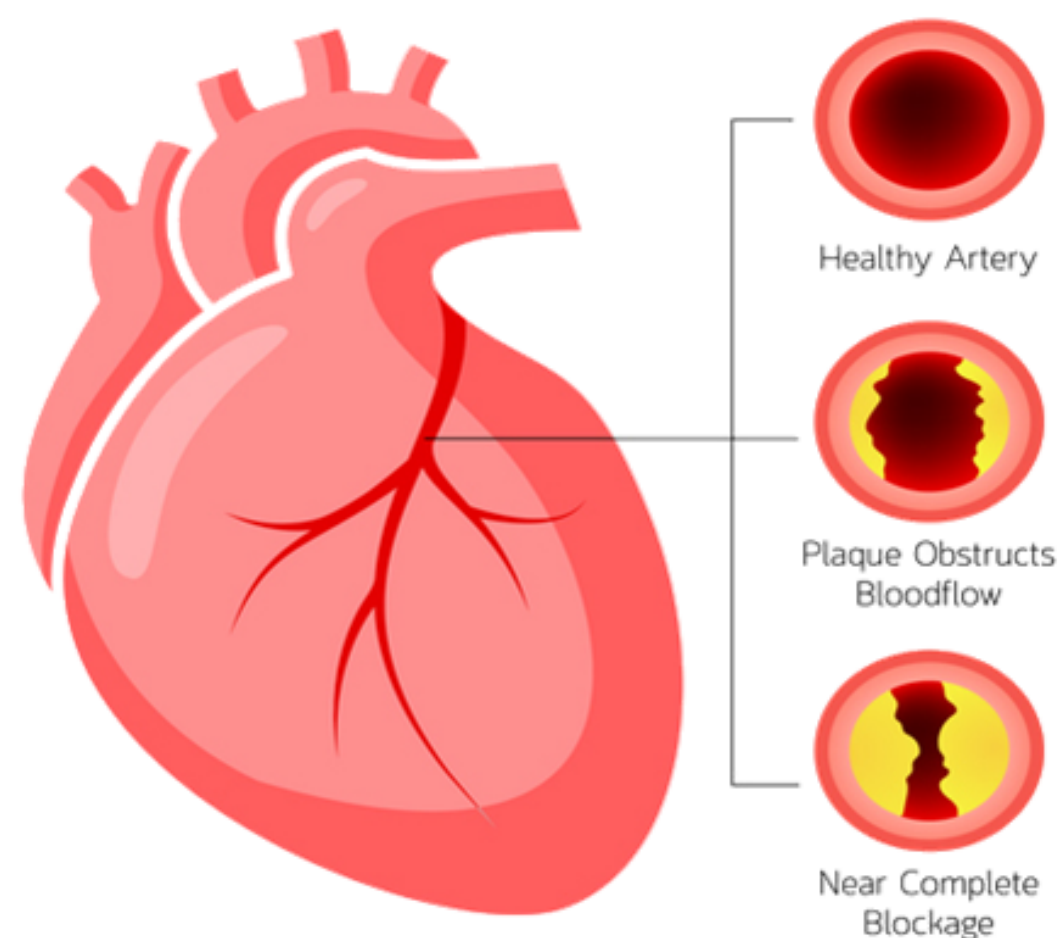
Deaths 2014-2018 Cleveland County:

Heart Disease: 1,264

Stroke: 322

Symptoms in Men:

Shortness of breath, Back pain,
Vomiting, Chest pain, Jaw pain,
Neck pain



Resources

American Heart Association

<https://www.heart.org/en>

Atrium Health Cardiac Rehabilitation

- Address: 201 E Grover St, Shelby, NC 28150
- Phone: (980) 487-3659
- Medicare and Medicaid accepted

Atrium Health Sanger Heart & Vascular Institute

- Address: 111 W Grover St, Shelby, NC 28150
- Phone: (980) 487-1900
- Medicare and Medicaid accepted

Community and Clinical Connections for Prevention and Health (CCCPH)

<https://www.communityclinicalconnections.com/about-us/>

WISE WOMAN

Cleveland County Public Health Center Wise Woman Program is a screening clinic to reduce the risk of heart disease and stroke in women. Patients will receive a free cholesterol, blood sugar and blood pressure screening. They will receive health coaching for any abnormal results. Patients must be uninsured, 40 years of age or older and meet financial eligibility. Call 980-484-5100 to determine eligibility and make an appointment.

www.cdc.gov/wisewoman

This resource guide contains information about local services in Cleveland County. The inclusion of any organization, agency or service in this guide does not imply an endorsement or recommendation, nor does the exclusion of any group imply disapproval.

The Cleveland County Public Health Center complies with applicable Federal Civil Rights Laws and participation in services is without regard to race, color, national origin, religion, gender, age, sexual orientation or disability.

El centro de Salud Pública del Condado de Cleveland cumple con Las Leyes Federales de Derechos Civiles aplicables y en la participación de los servicios sin la distinción de raza, color, origen, nacional, genero, edad, orientación sexual o discapacidad.



CLEVELAND COUNTY

PUBLIC HEALTH CENTER